

HYPRO SC

HYPERBARIC SUPPLY CENTRE

HYPRO SC Hyperbaric supply centres are self-contained and conveniently position all the hyperbaric chamber valving and alarm functions in one central place while also bringing medical gas, communications and power outlets to the supply centre's location. The units are a surface-mount design, extremely adaptable and can be installed with a minimum of damage and modifications to existing walls.

BASIC CONSTRUCTION

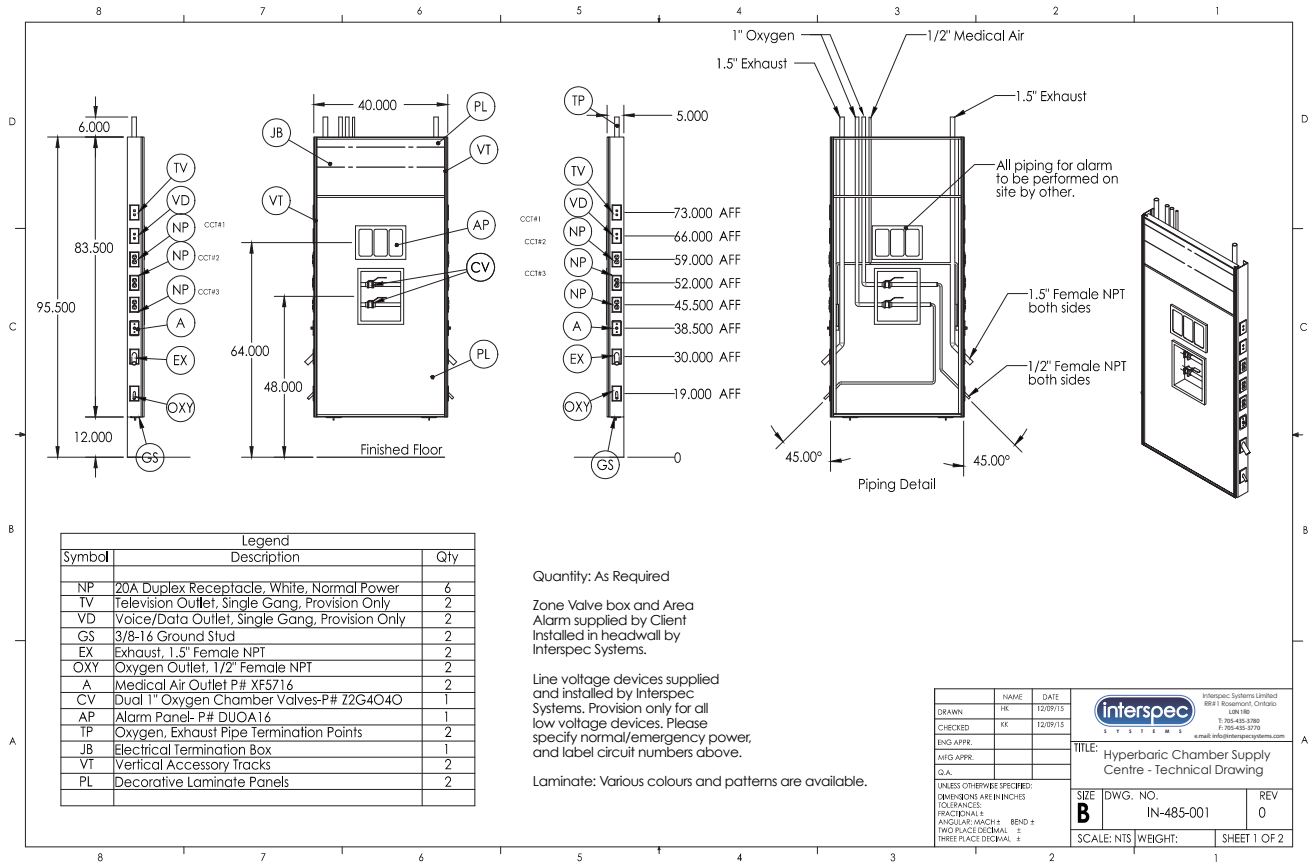
The enclosure is constructed of extruded, clear anodized aluminum sections that provide a modular, self-contained wall unit. All secondary wiring is enclosed in conduits terminating at a convenient electrical connection point. All wiring is marked, colour-coded and tie-wrapped for easy circuit identification and hook-up.

Continued on Back...



SUPERIOR
HEADWALL SYSTEMS

interspec
S Y S T E M S



***Due to constant product development, features and specifications are subject to change without notice. Please contact Interspec for the latest information and configurations.**

Specified electrical devices can be mounted on the sides of the unit along with a variety of medical gas outlets. All supplied power outlets are Hospital Grade, 2 pole, 3 wire and rated for 15 or 20 amperes, 120 volt. All wiring devices and gas fittings are CSA approved.

The decorative plastic laminate cover panels are available in a wide selection of patterns and colours from several manufacturers.

HYPRO BC COMPONENTS:

HYPRO Hyperbaric control units are custom-manufactured to the specifications laid down during our design consulting phase according to the supplied shop drawings and documents. Units can be adapted to accommodate any hospital requirements. Terminal connections are as specified in the drawings and allow easy connection by the electrical contractor.

- **Medical gas Outlets** are factory-installed by Interspec and checked for compliance to the specifications and all outlets and manifolds are tested in accordance with CSA Z7396.1-06 standards. Singular terminal connections as specified are provided for the primary supply line hook-ups by the mechanical contractor
- **Zone Valves and Area Alarm** units supplied by the client can be installed by us as required.
- **Power Outlet** receptacles are Hospital Grade and CSA approved. The quantity and type are as specified in the final plans.
- **Internal Ground Bus** is included with a minimum of 8 screw fasteners. The ground bus assembly also provides a positive means for grounding the unit.
- **Grounding Jacks** and all other electrical components are manufactured to CSA specifications.

Contact us for more information.

Interspec Systems
 995841 Mono/Adjala Townline
 RR#1 Rosemont
 Ontario, Canada
 L6N 1R0

Toll free: (866) 888-8981
 Tel: (705) 435-3780
 Fax: (705) 435-3770
 e.mail: info@interspecsystems.com
 www.interspecsystems.com

